

ANNEX V

STAGE 1 SUMMARY ARCHAEOLOGICAL ASSESSMENT REPORT

WOODLAND HERITAGE SERVICES LIMITED

XENECA ARCHAEOLOGICAL REPORT

Modified Public Access Report to Protect Known Archaeological Site Locations Under the Ontario Heritage Act and Confidential Information Under the Freedom of Information and Protection of Privacy Act.

STAGE 1 ARCHAEOLOGICAL AND CULTURAL HERITAGE RESOURCE ASSESSMENT OF A PROPOSED HYDRO DEVELOPMENT AT WANATANGO FALLS ON THE FREDERICK HOUSE RIVER, MANN TOWNSHIP, COCHRANE DISTRICT, ONTARIO.

Prepared for

**XENECA POWER DEVELOPMENT INC.
5160 Younge St., Suite 520,
Toronto, On M2N 6L9**

**Attention: Ed Laratta
Tel.: 416.590.9632
Fax: 416.590.9955
E: elaratta@xeneca.com**

Submitted by

**WOODLAND HERITAGE SERVICES LIMITED
17 Wellington Street, Box 2529
New Liskeard, Ontario
P0J 1P0**

Our Project # J2010-35-FREDRICK HOUSE

January 28, 2011

Executive Summary

This is a modified public access report to protect known archaeological site locations under the Ontario Heritage Act and confidential information under the Freedom of Information and Protection of Privacy Act.

A Stage 1 archaeological and cultural heritage assessment was carried out for a proposed hydroelectric project at Wanatango Falls on the Frederick House River in Mann Township, Cochrane District. The proposed dam location is found on the Frederick House River north of Frederick House Lake. This hydroelectric development if successful will contribute approximately 4.67 MW of power. As a consequence of the proposed dam installation, flooding will extend southward in low lying areas for 8.5 km south of the dam along the Frederick House River (see Figure 2).

Full recommendations are found in section 2.2 of this report.

1.0 PROJECT BACKGROUND

This section of the project report provides the context for the archaeological fieldwork. The project background section covers three areas: development context, historical context, and archaeological context.

1.1 Development context

The archaeological and cultural heritage field work was required by the Ministry of Tourism and Culture in advance of the future development of hydro power facility and dam. This proposed power project in Mann Township can be located by referring to Figures 1 and 2.

The archaeological field work was performed in advance of any new ground-disturbing activities.

The area of disturbance will include road and transmission line corridors, dam, penstock and powerhouse construction as well as the 8.5 km. of variable inundation south of the dam site.

Woodland Heritage Services received permission to pass on the property in future and perform all activities related to archaeological and cultural heritage assessments.

1.2 Historical context

Archaeologists generally divide northeastern Ontario's prehistory into the following generalized temporal/cultural sequences;

Late Palaeo (circa 7,000 - 5000 BC)

Shield Archaic (circa 5,000 - 500 BC)

Middle Woodland (circa 500 BC - AD 1200)

Late Woodland (circa AD 1200 - AD 1600)

Historic (circa AD 1600 - present)

Late Prehistoric and Modern Native Peoples (A.D. 1600 - 1900 A.D.)

1.3.2. Current Land Use(S), Field Conditions, Soils And Topography

The lands directly associated with the property in question current do not appear to be used for a particular purpose other than as a recreation area or canoe route.

The soils encountered were dominantly glaciolacustrine with clay being the dominant grain size. The Northern Ontario Geological Terrain Study (NOEGTS) information

displays an alluvial deposit intersecting with the Frederick House River in some sections. Sand is the primary material in its composition. The fieldwork component of the Stage 2 assessment will examine the study area for these deposits.

2.0 Stage 1 Assessment Background

2.0.1 Property Inspection

The property inspection will be carried out during the Stage 2 Assessment field work.

2.1 Stage 1 Analysis and Conclusions

2.1.1 Identify and describe areas of archaeological potential within the project area.

This study area is located within the Canadian Shield and as such often presents areas of complex archaeological potential. After a map and satellite based analysis it was determined that areas of archaeological potential do exist, and that a follow-up Stage 2 assessment is recommended.

2.1.2 Identify and describe areas that have been subject to extensive and deep land alterations.

Figure 2 provides a visual description of the land in question. It is unknown if the land had been disturbed in the past.

2.2 Stage 1 Recommendations

2.2.1 Make recommendations regarding the potential for the property.

It is recommended that the areas of Wanatango Falls, as well as the north and south sections of the Fredrick House River, have high archaeological potential. A follow-up Stage 2 assessment is recommended for these areas of high potential.

2.3 Advice on compliance with legislation

Advice on compliance with legislation is not part of the archaeological record. However, for the benefit of the proponent and approval authority in the land use planning and development process, the report must include the following standard statements:

- a. This report is submitted to the Minister of Culture as a condition of licensing in accordance with Part VI of the Ontario Heritage Act, R.S.O. 1990, c 0.18. The report is reviewed to ensure that the licensed consultant archaeologist has met the terms and conditions of their archaeological licence, and that the archaeological fieldwork and report recommendations ensure the conservation, protection and preservation of the cultural heritage of Ontario.

- b. Should previously undocumented archaeological resources be discovered, they may be a new archaeological site and therefore subject to Section 48 (1) of the Ontario Heritage Act. The proponent or person discovering the archaeological resources must cease alteration of the site immediately and engage a licensed consultant archaeologist to carry out archaeological fieldwork, in compliance with sec. 48 (1) of the Ontario Heritage Act.

- c. The Cemeteries Act requires that any person discovering human remains must notify the police or coroner and the Registrar of cemeteries, Ministry of Small Business and Consumer Services.

*Reports recommending further archaeological fieldwork or protection for one or more archaeological sites must include the following standard statement: 'Archaeological sites recommended for further archaeological fieldwork or protection remain subject to Section 48 (1) of the Ontario Heritage Act. and may not be altered, or have artifacts removed, except by a person holding an archaeological licence'.

3.0 Figures (Maps and Images) On following pages.

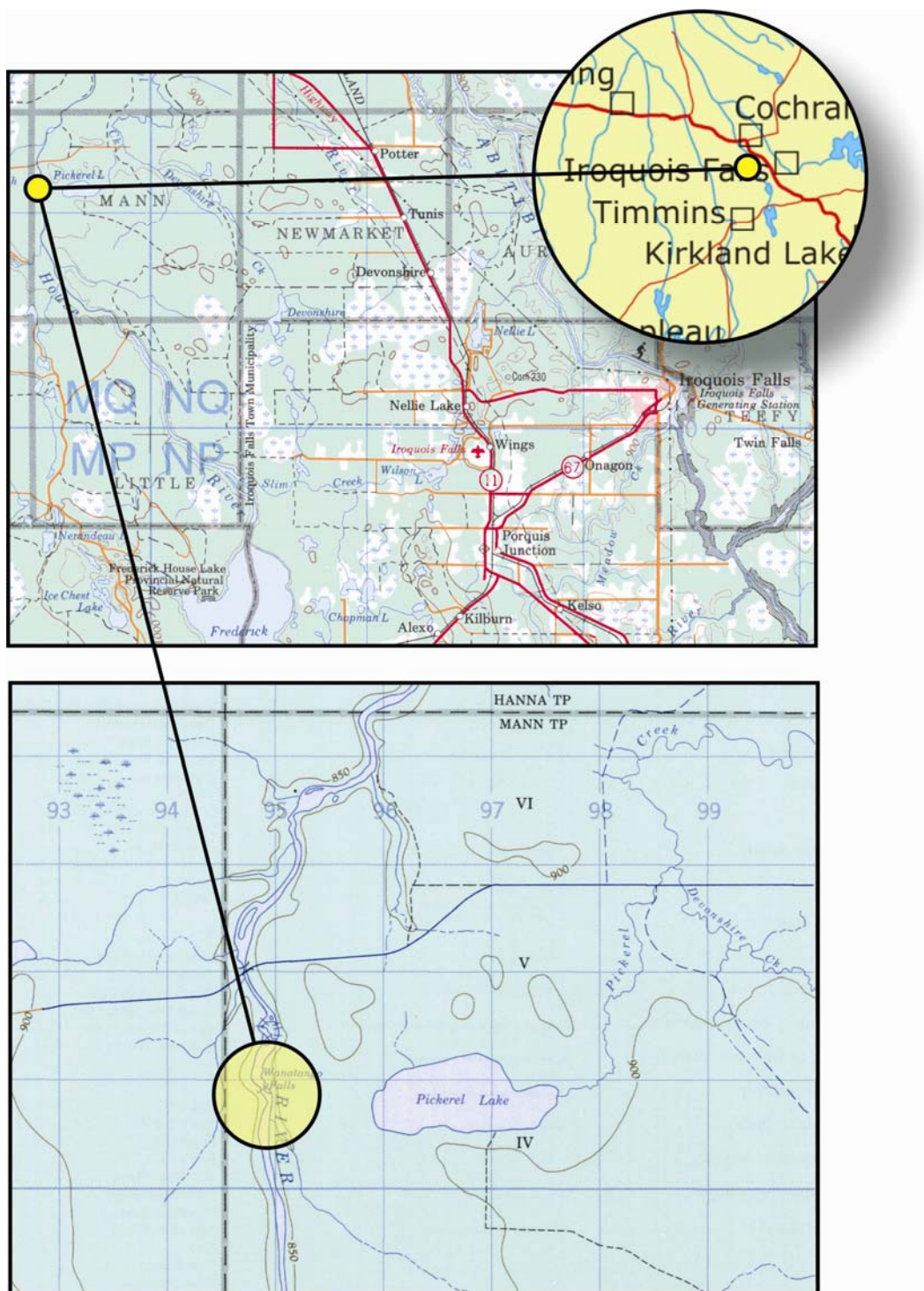


Figure 1. Project location map (location approximate).

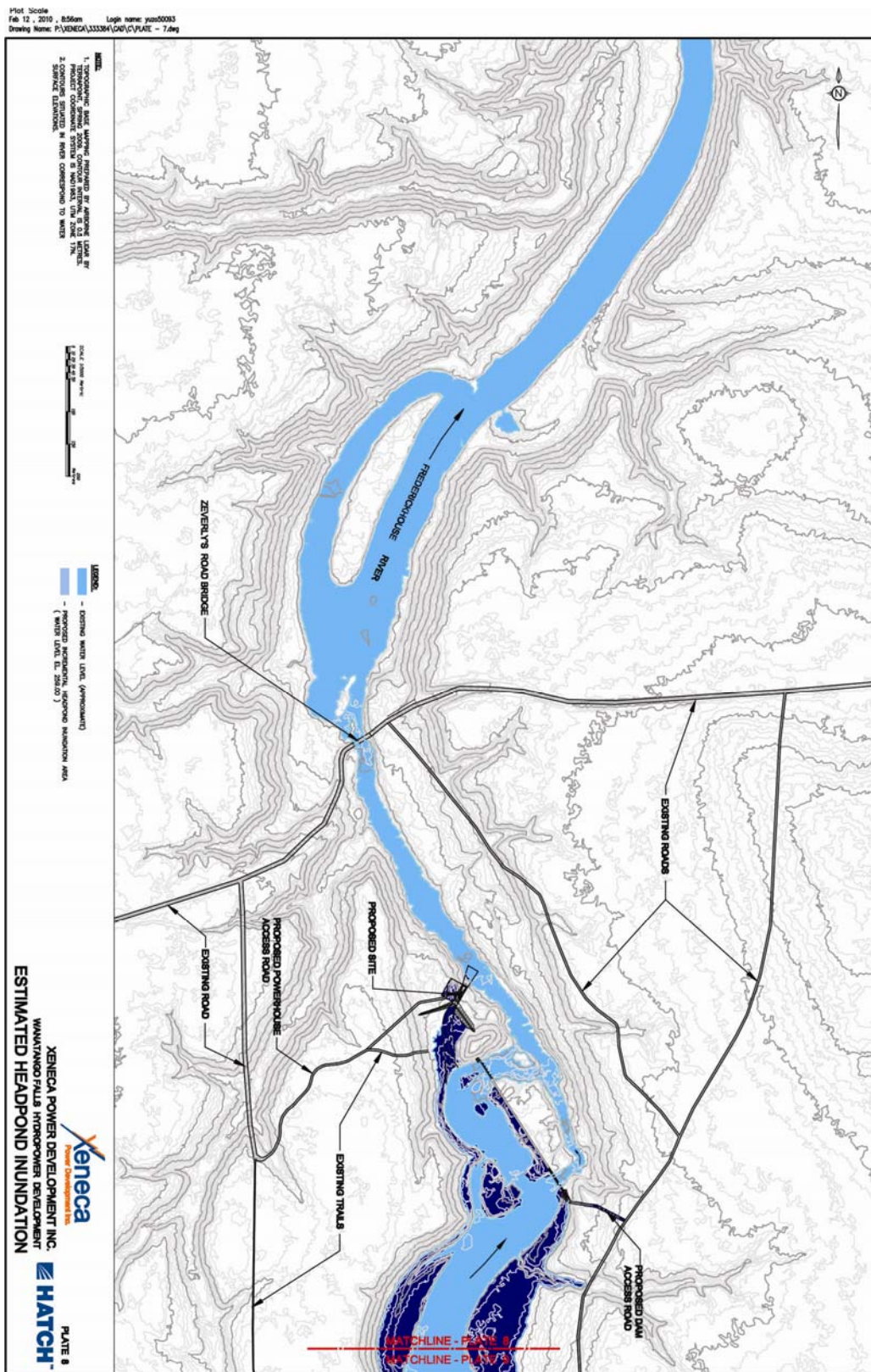


Figure 2. Areas of inundation around the proposed dam and powerhouse features.

4.0 References

Biggar, H.P. editor

- 1922 The Works of Samuel de Champlain. In Six Volumes. The Champlain Society: Toronto, 1922-1936.

Canada

- 1891 Indian Treaties and Surrenders from 1680 to 1890. 2 vols. Ottawa. Ottawa: Queen's Printer.

Canada

- 1923 Copy of the Treaty Made October 31, 1923 between His Majesty the King and the Chippewa Indians of Christian Island, Georgina Island and Rama. Ottawa: King's Printer.

Day, Gordon and Bruce Trigger

- 1978 "Algonquin" in Handbook of North American Indians. Volume 15. Bruce Trigger volume editor. Smithsonian Institution, Washington.

DCB XI

- Robert Peter Gillis, "W.G. Perley", Dictionary of Canadian Biography, Volume XI. Toronto: University of Toronto Press, 1982:681-682.

Jones, Peter

- 1861 History of the Ojebway Indians: With Especial Reference to their Conversion to Christianity. London:A.W. Bennett. Reprinted Freeport, N.Y.: Books for Libraries, 1970.

Kennedy, Clyde C.

- 1970 The Upper Ottawa Valley. Renfrew County Council, Pembroke.

Mika, Nick and Helma, editors.

- 1977 Places in Ontario: Their Names Origins and History. Mika Publishing, Belleville.

Ontario Atlas

- 1969 Economic Atlas of Ontario. Toronto: University of Toronto Press. Plate 98: Evolution of Administrative Areas, 1788 to 1899; Plate 99: Original Township Surveys, Southern Ontario.

Pollock, John W.

- 1975 Algonquian Culture Development and Archaeological Sequences in Northeastern Ontario. Canadian Archaeological Association, Bulletin 7:1-53.
- 1976b The Culture History of Kirkland Lake District, Northeastern Ontario. National Museum of Man, Mercury Series, Archaeological Survey of Canada, Paper 54.
- 1984 A Technological Analysis of Lake Abitibi Bifaces. Unpublished Ph.D. Thesis, Department of Anthropology, University of Alberta.
- 1994 Lake Abitibi Model Forest, Cultural Heritage Project. In the Fifth Annual Archaeological Report, Ontario. Volume 5 (New Series 1994) pp. 50-56.

Rogers, Edward S.

- 1978 "Southeastern Ojibwa", in Bruce G. Trigger (ed.), Northeast, Volume 15 of Handbook of North American Indian. Washington: Smithsonian Institution: 760-771.

Speck, Frank G.

- 1915 Family Hunting Territories and Social Life of Various Algonkian Bands of the Ottawa Valley. Geological Survey of Canada, Memoir 70. Ottawa

Thwaites, Rueben Gold (ed.)

- 1896-1901 The Jesuit Relations and Allied Documents.
Cleveland: Burrows Brothers. Volume XVIII: Hurons and Quebec, 1640.

Vidal and Anderson

- 1849 Report of Commissioners A. Vidal and T.G. Anderson on visit to Indians... 5 December 1849. Archives of Ontario. Irving Papers. MU 1464. 26/31/04.

Wright, J.V.

- 1963 A Regional Examination of Ojibwa Culture History. Anthropological, N.S. Vol. VII, No. 2, pp. 189-227.

Zaslow, Morris

1971 The Opening of the Canadian North, 1870-1914. Toronto: McClelland and Stewart.